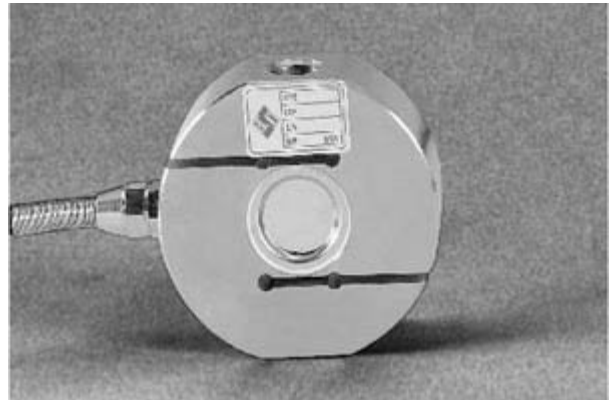




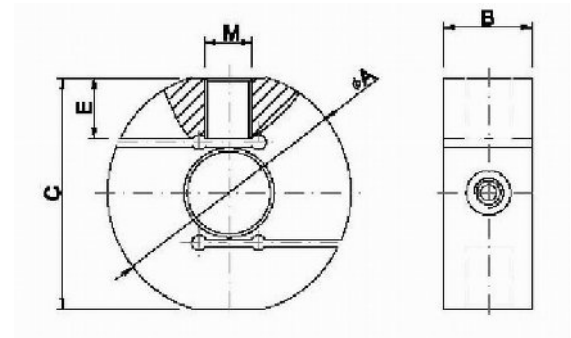
# ATS4 "S" Type Load Cell

Steel load cell suitable for;  
Batching Scale  
Industrial Weighing System

Material  
Steel



Specifications	
Capacity(Kg)	50,100,200,300,1000,1500,2000,3000,5000,10000
Rated Output	2mV/V $\pm$ 10%
Zero Balance	$\pm$ 2% F.S.
Non-Linearity	0.02% F.S.
Hysteresis	0.02 % F.S.
Non-Repeatability	0.02 % F.S.
Creep (30min)	0.025% F.S.
Temperature Effect on Output	0.025 % F.S./10°C
Temperature Effect on Zero	0.025% F.S./10°C
Input Impedance	385 $\pm$ 10 $\Omega$
Output Impedance	350 $\pm$ 3 $\Omega$
Insulation	>2000 M $\Omega$ /50Vdc
Recommended Excitation	10 Vdc
Maximum Excitation	15 Vdc
Compensated Temperature Range	-10°C to +40°C
Operating Temperature Range	-20°C to +60°C
Safe Overload	150% F.S.
Ultimate Overload	250% F.S.
Cable Size	$\varnothing$ 5 x 3000 mm
Protection Class	IP68
Excitation	Red: + Black - Signal Green + White -



CAP / Kg	A	B	C	E	M
50/100/200/300/500	63.5	22	59.5	14.5	M12
1000/2500	82	30	78	21	M16 x 2
3000/5000	102	45	90	24	M24 x 2
7500	167	50	163	63	M30 x 2



**Analogue 8**  
ABN: 57 005 531 484

<http://admeasure.com.au>  
[sales@admeasure.com.au](mailto:sales@admeasure.com.au)



27 Camberra Drive  
Seaford, 3198  
Victoria Australia

Ph: 03 8770 6500  
Fax: 03 8770 6590